



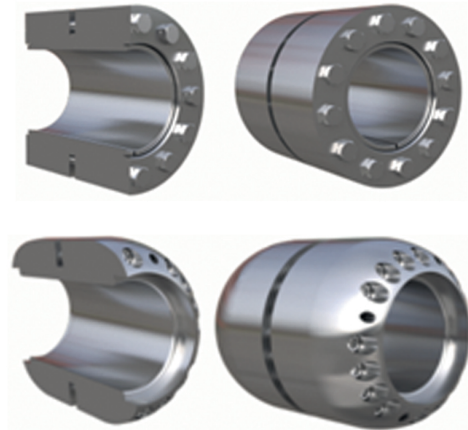
Shaft Coupling - Screw Type



DESCRIPTION

Couplings are devices which are mainly used to transmit rotational energy (namely rotational torque, rotational movements) from a shaft to another shaft. Couplings are divided to rigid and flexible types. In rigid couplings, oscillation is insignificant in the transmitted torque (such as shell couplings).

Wearing doesn't occur in this kind of coupling; it doesn't need maintenance and can be used in both rotation directions. This type of coupling provides shaft to shaft connection or shaft to flange connection through friction of conical surface on each other. Strong bolts assemble conical surfaces on each other.



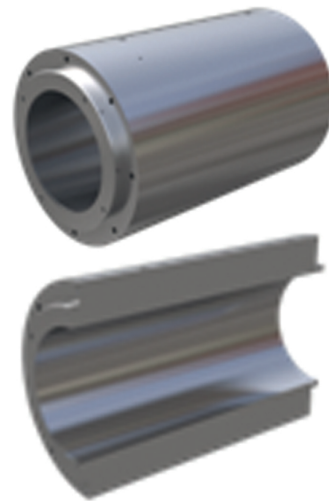
Shaft Coupling - Hydraulic TYPE TSCH - 290-600

DESCRIPTION

Couplings are devices which are mainly used to transmit rotational energy (namely rotational torque, rotational movements) from a shaft to another shaft. Couplings are divided to rigid and flexible types.

In rigid couplings such as shell coupling, oscillations are low in the transmitted torque, and the introduced product is a rigid coupling. These kinds of couplings have no wearing, they don't require maintenance and they can be used in both rotational direction.

Rotational torque pulses and vibrations are transmitted without damping. This type of coupling provides shaft to shaft connection or shaft to flange connection through friction of conical surfaces on each other.



SPECIFICATIONS

TYPE	Amount	Unit
Tmax	600000	N.m
Length	290	mm
Outer Dia.	470	mm
Inner Dia.	750	mm
Weight	580	Kg